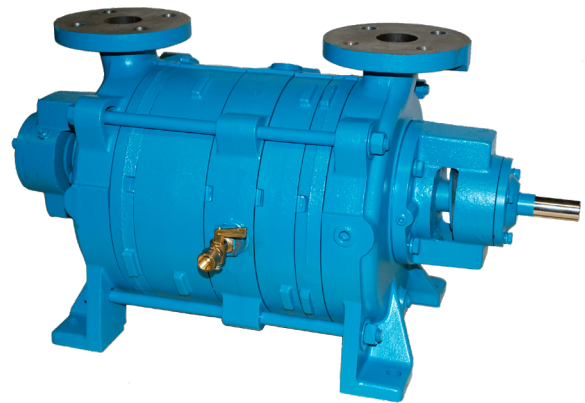


Model KLRC-75

Features

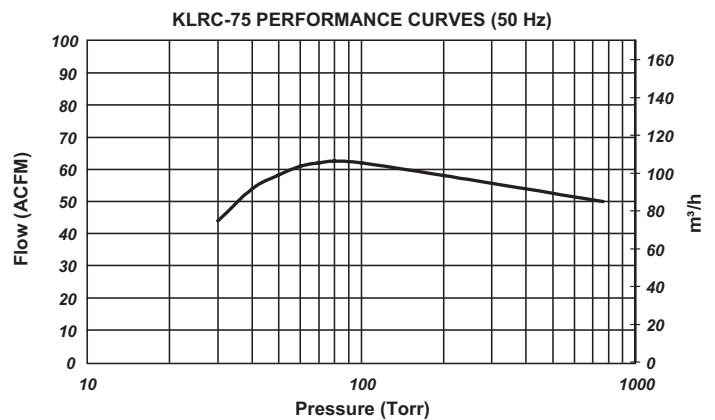
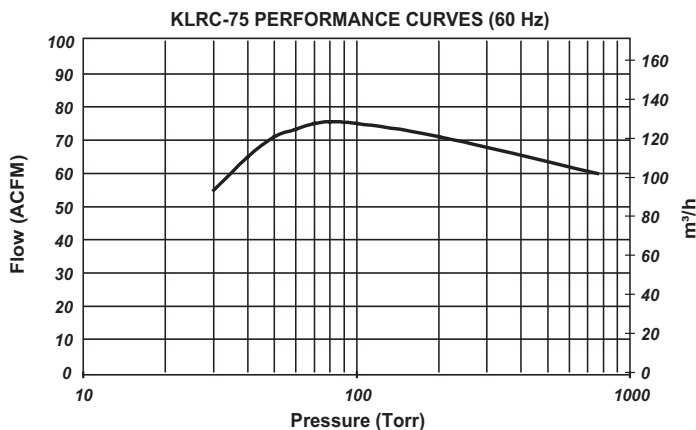
- Impellers positively locked to shaft
- Reliable mechanical seals for high-integrity sealing and low shaft friction
- Center-anchored tie rods allow access to either end of the pump without total disassembly
- Precision casting and CNC machining eliminates the need for body gasketing (process dependent)
- Replaceable end plates
- Clearance adjustments via shims
- Made in the USA



KLRC - 75 Material & Seal Code		
KLRC-75 XY	X	Material code
	Y	Mechanical seal code
Material Code (X)	F	Cast iron casings, SS316L impellers & SS316 shaft
	C	All wetted parts SS316L & SS316 shaft
Mechanical Seal Code (Y)	A	John Crane Type 21 Carbon/Ceramic/Viton
	D	Flowserve Type RO Carbon/Durchrome/Viton.
	L	PTFE encapsulated Viton O-Rings
Consult factory for alternate seal configurations		

Specifications	KLRC-75	
	60 Hz	50 Hz
Motor Power	5 HP	4 KW
Pump Speed	1750 RPM	1450 RPM
Seal Water Flow	5 GPM	
Noise Level	69 dBA @ 75 Torr (3 ft)	
Maximum Allowable Suction Temperature	220°F (Hot Pump)	

Typical Pumping Speed Curves



- 1.) Above performance data based on 68° F inlet air with 50% relative humidity and using water as a sealant at 60° F.
- 2.) All SS pump capacity less 10%

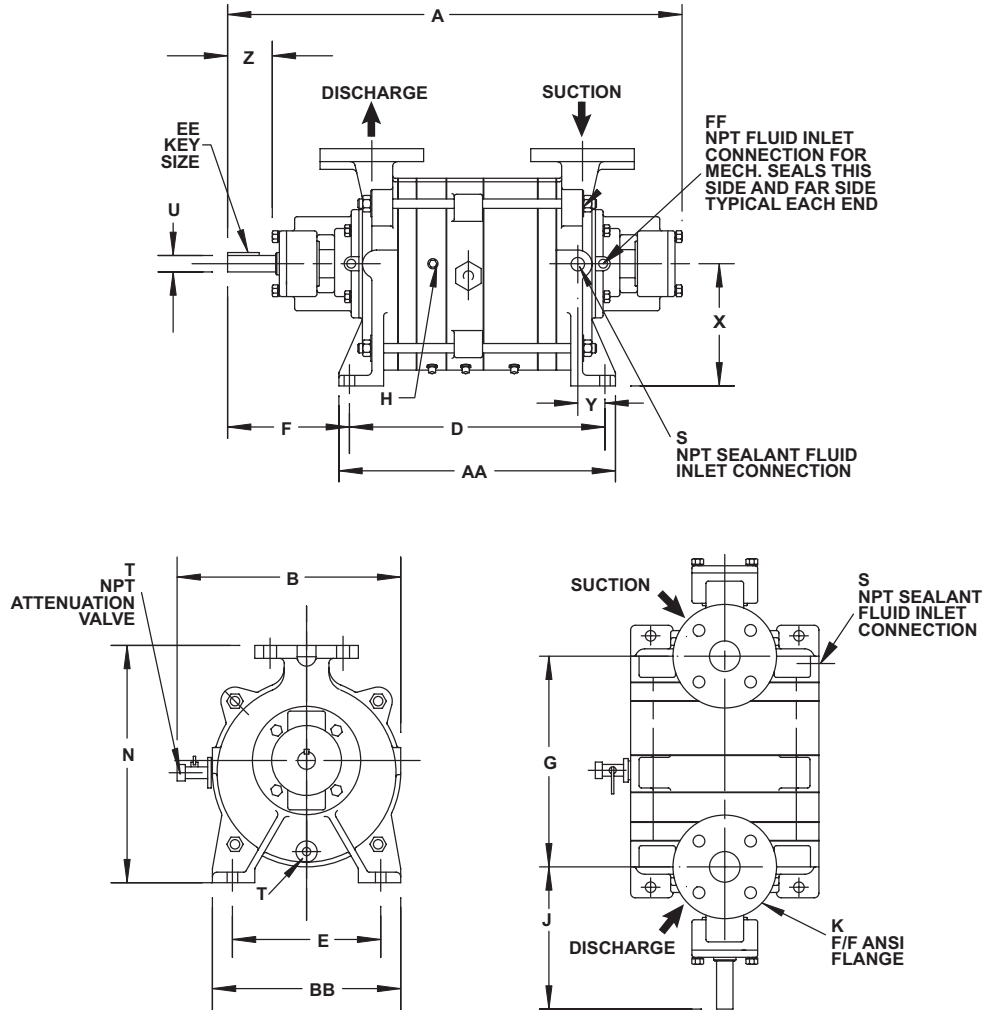
Dimensions

Values shown are approximate and should not be used for construction.
 Certified drawings are available through your local Kinney Sales Professional.

Bare Shaft Pump

Model: **KLRC-75**

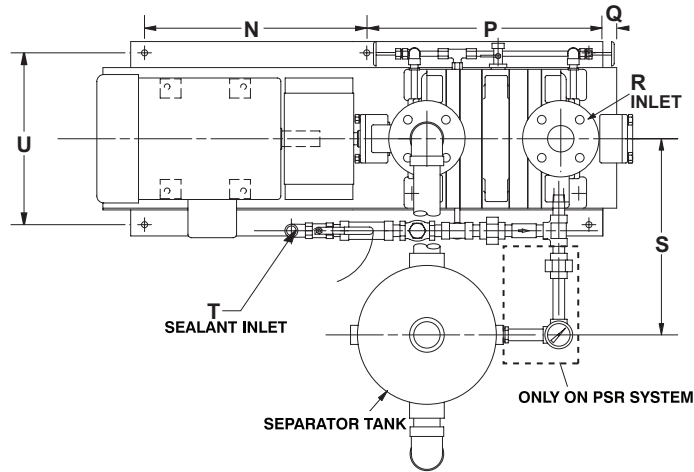
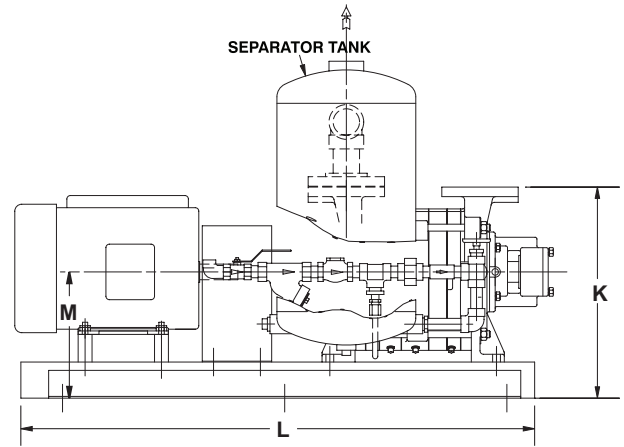
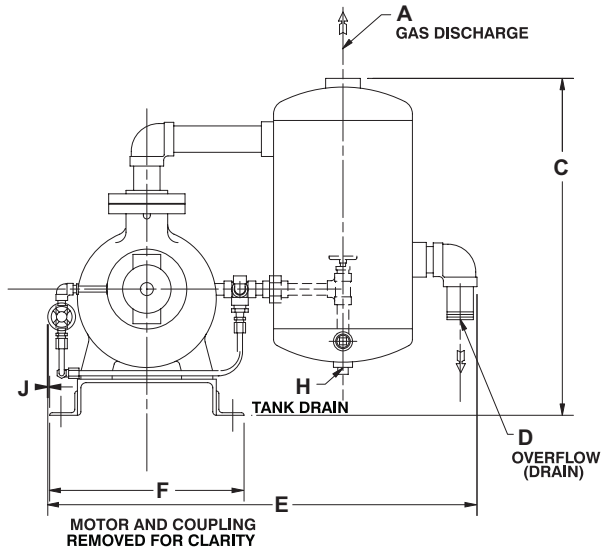
PUMP ROTATION COUNTERCLOCK-
 WISE FACING PUMP DRIVE SHAFT



in mm	A	B	D	E	F	G	H	J	K	N
KLRC-75	24 1/8 612	11 7/8 301	13 9/16 344	7 7/8 200	6 3/8 162	11 3/16 284	1/4 NPTF	7 9/16 192	1 1/2"	12 5/8 320

in mm	S	T	U	X	Y	Z	AA	BB	EE	FF	APPROX. WEIGHT LBS / kg
KLRC-75	1/2" NPTF	1/4" NPTF	7/8"	6 1/2 165	1 7/16 36	2 3/8 60	14 11/16 373	10 254	3/16 x 3/16	1/8" NPTF	200 / 91

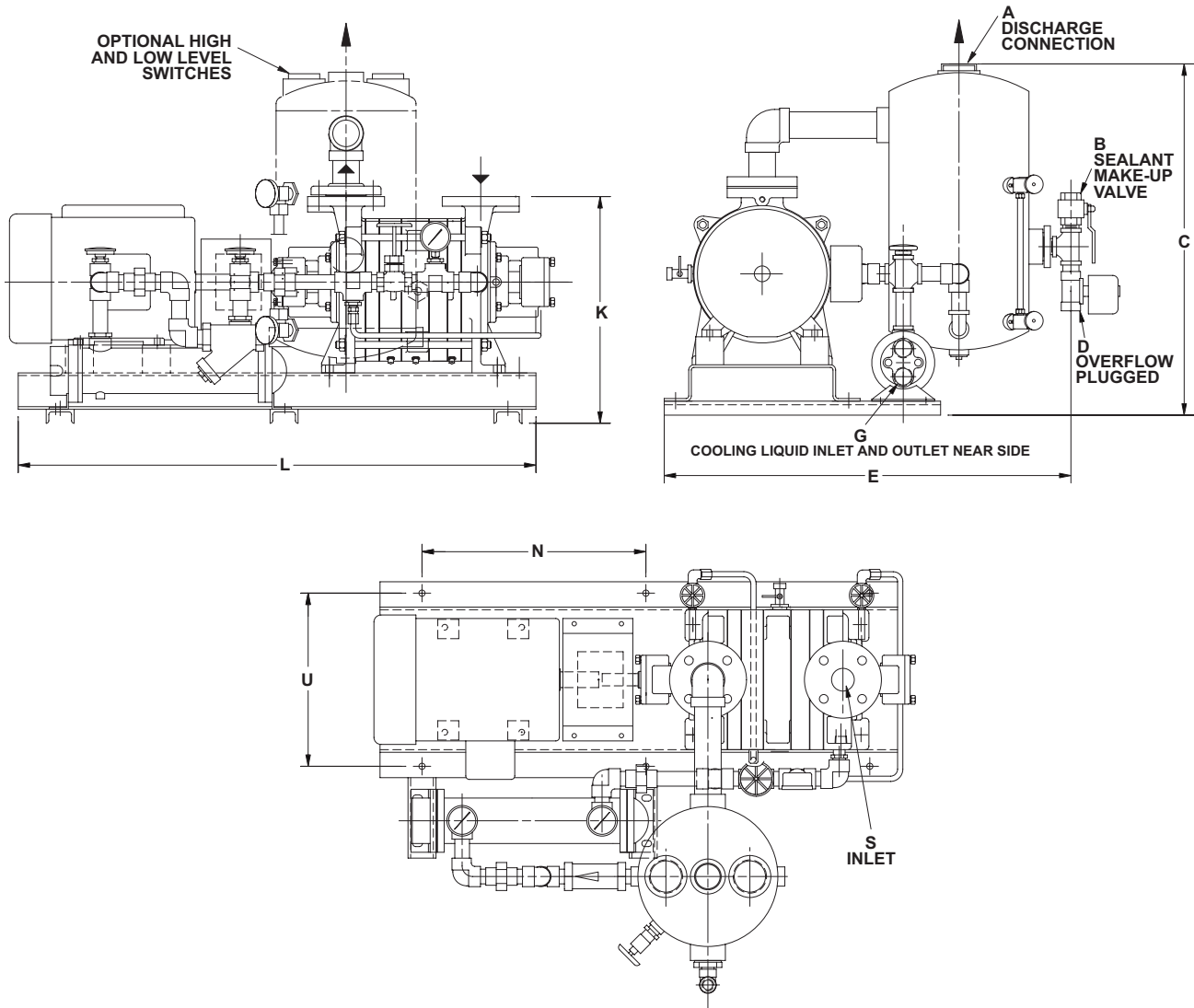
NSR (No Sealant Recovery) & PSR (Partial Sealant Recovery) System Model: KLRC-75



in mm	A	C	D	E	F	J	K	L	M	N	P	Q	R	S	T	U	APPROX. WEIGHT LBS / kg
KLRC-75	1 1/2" NPTM	24 1/4 616	1 1/2" NPTM	30 15/16 786	14 356	1/8 3	15 3/16 386	37 940	9 1/16 230	16 406	16 406	2 51	1 1/2" F/F Flange	14 1/8 359	1/2" NPTF	12 3/8 314	562 255

FSR (Full Sealant Recovery) System

Model: KLRC-75



in mm	A	B	C	D	E	G	K	L	N	S	U	APPROX. WEIGHT LBS / kg
KLRC-75	1 1/2" NPT	1/2" NPT	25 1/8 637	1/2" NPT	29 1/16 738	1" NPT	16 3/16 411	37 940	16 406	1 1/2" F/F Flange	12 3/8 314	587 266

CONTACT US

For more information, contact your
Regional Sales Manager or call us at:

1-800-825-6937

Your Local Sales Professional:

Model KLRC-125

Features

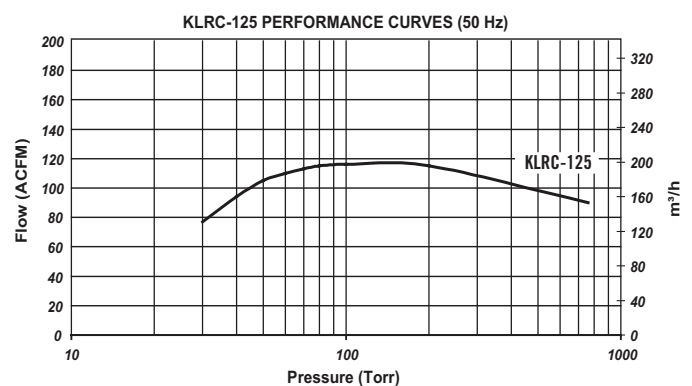
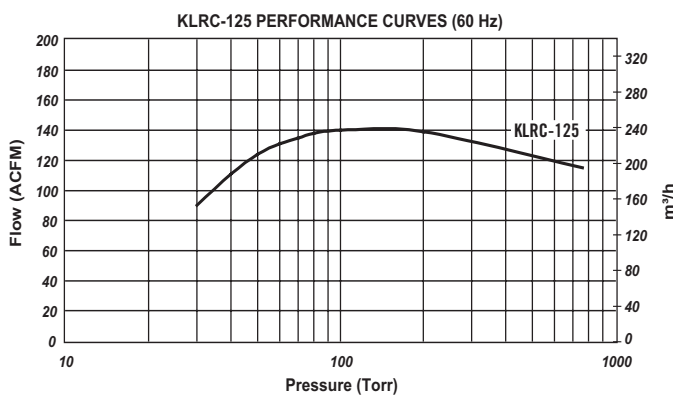
- Impellers positively locked to shaft
- Reliable mechanical seals for high-integrity sealing and low shaft friction
- Center-anchored tie rods allow access to either end of the pump without total disassembly
- Precision casting and CNC machining eliminates the need for body gasketing (process dependent)
- Replaceable end plates
- Clearance adjustments via shims
- Made in the USA



KLRC - 125 Material & Seal Code		
KLRC - 125 XY	X	Material code
	Y	Mechanical seal code
Material Code (X)	F	Cast iron casings, SS316L impellers & SS316 shaft
	C	All wetted parts SS316L & SS316 shaft
Mechanical Seal Code (Y)	A	John Crane Type 21 Carbon/Ceramic/Viton
	D	Flowserve Type RO Carbon/Durchrome/Viton.
	L	PTFE encapsulated Viton O-Rings
Consult factory for alternate seal configurations		

Specifications	KLRC-125	
	60 Hz	50 Hz
Motor Power	10 HP	7.5 KW
Pump Speed	1750 RPM	1450 RPM
Seal Water Flow	7 GPM	
Noise Level	74 dBA @ 60 Torr (3 ft)	
Maximum Allowable Suction Temperature	220° F (Hot Pump)	

Typical Pumping Speed Curves



- 1.) Above performance data based on 68° F inlet air with 50% relative humidity and using water as a sealant at 60° F.
- 2.) All SS pump capacity less 10%

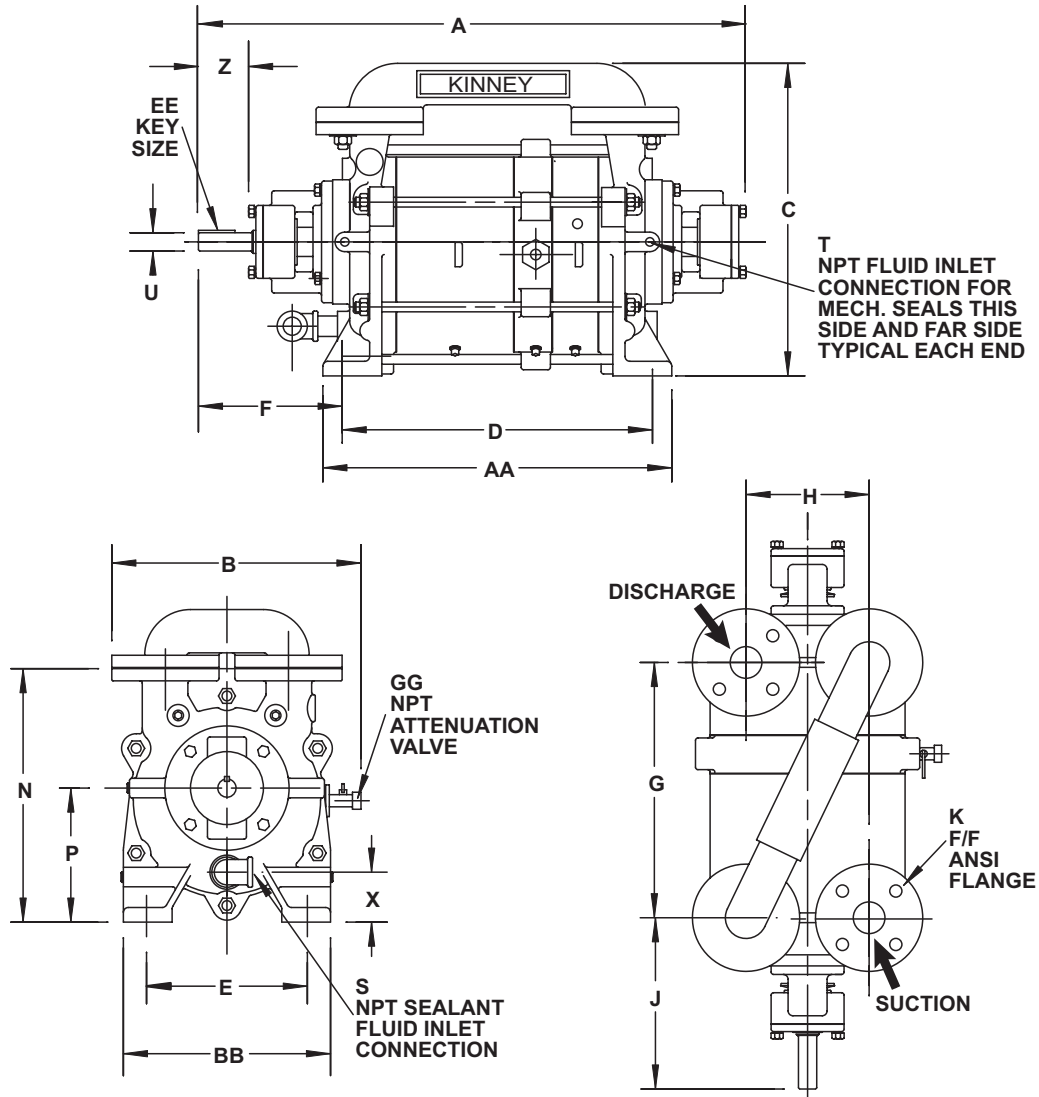
Dimensions

Values shown are approximate and should not be used for construction.
 Certified drawings are available through your local Kinney Professional.

Bare Shaft Pump

Models: KLRC-125

PUMP ROTATION CLOCKWISE
 FACING PUMP SHAFT

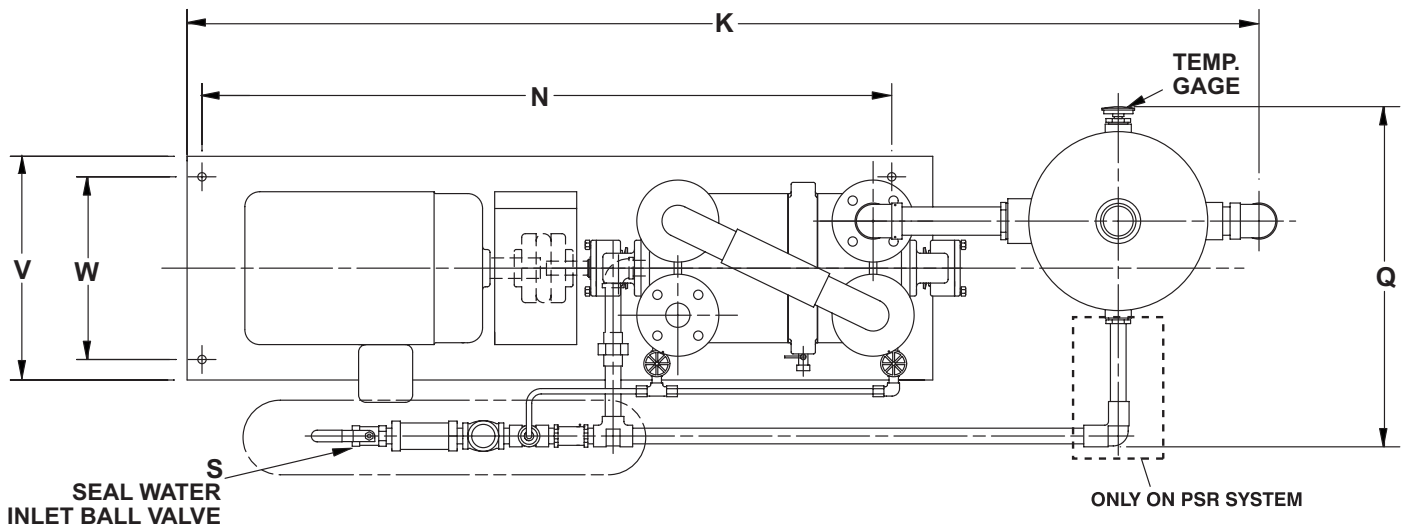
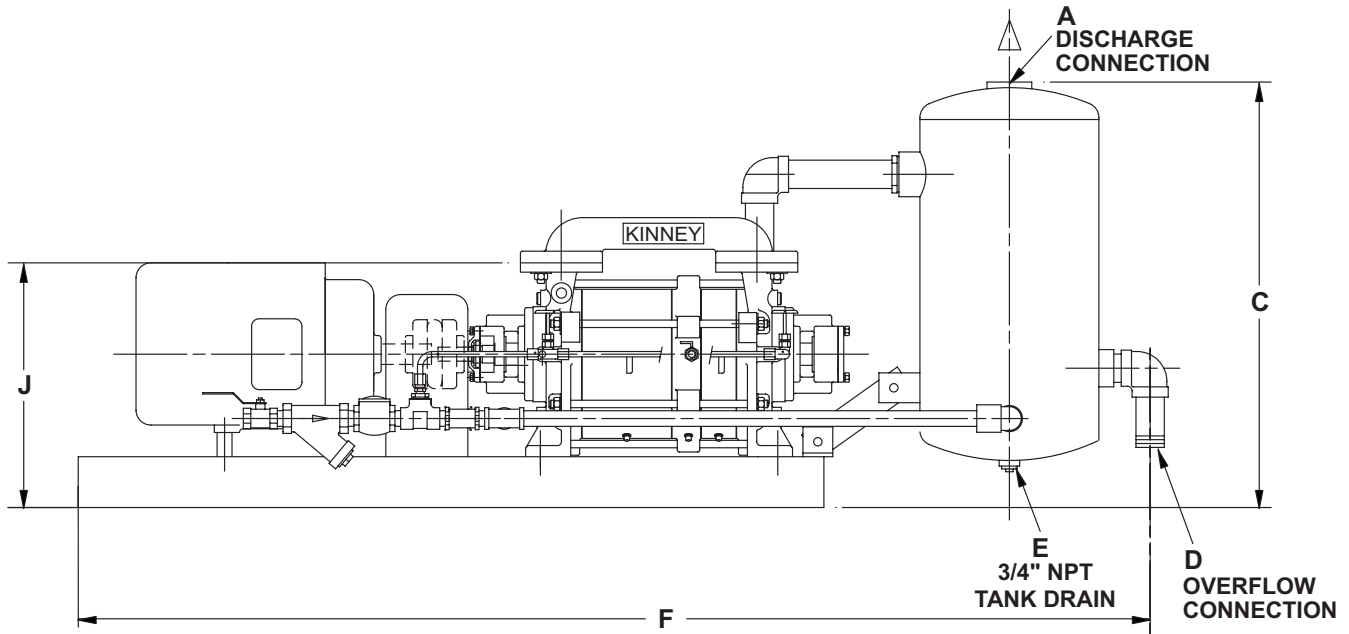


in mm	A	B	C	D	E	F	G	H	J	K	N
KLRC-125	28 1/16 718	12 3/4 324	16 406	15 15/16 404	8 1/4 210	7 178	13 1/8 333	6 5/16 160	8 13/32 214	1 1/2" ANSI	13 330

in mm	P	S	T	U	X	Z	AA	BB	EE	GG	APPROX. WEIGHT LBS / kg
KLRC-125	6 7/8 175	3/4"	1/4 NPTF	15/16"	2 9/16 65	2 1/8 54	17 7/8 454	10 5/8 270		1/4 NPTF	255 / 116

NSR (No Sealant Recovery) & PSR (Partial Sealant Recovery) System

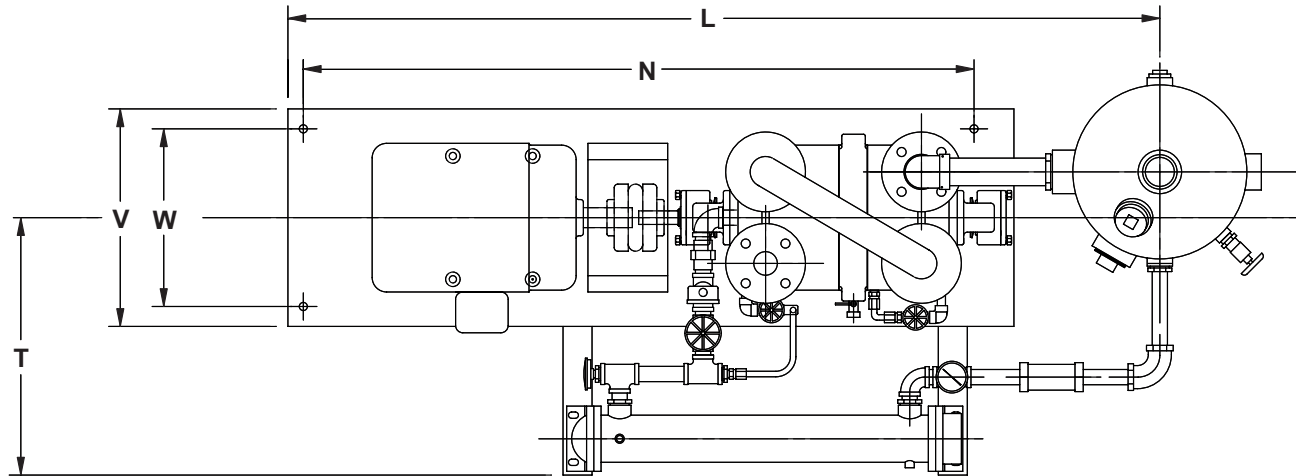
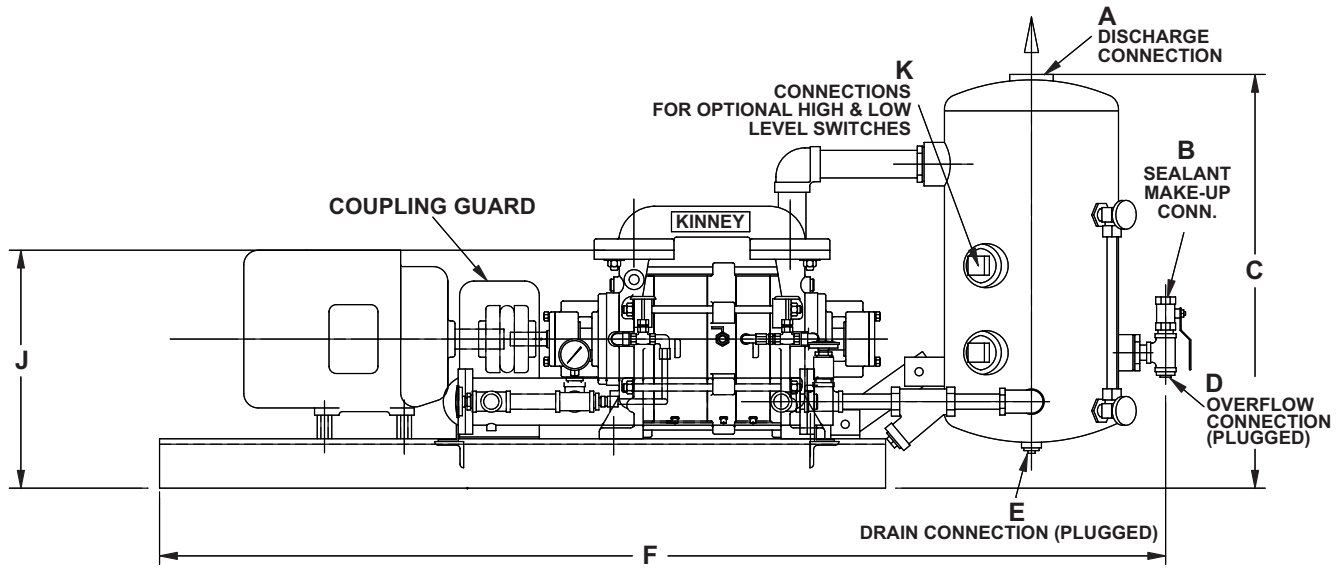
Models: KLRC-125



in mm	A	C	D	E	F	J	K	N	Q	S	V	W	APPROX. WEIGHT LBS / kg
KLRC-125	2" NPT	28 1/2 724	1 1/2" NPT	3/4" NPT	71 7/8 1826	16 3/8 416	71 7/8 1826	46 1/4 1175	22 3/4 578	3/4" NPT	15 381	12 1/4 451	750 340

FSR (Full Sealant Recovery) System

Models: KLRC-125



in mm	A	B	C	D	E	F	J	K	L	N	T	V	W	APPROX. WEIGHT LBS / kg
KLRC-125	2" NPT	3/4" NPT	28 1/2 724	3/4" NPT	3/4" NPT	71 3/4 1823	16 3/8 416	(2) 2" NPT	62 1/2 1588	46 1/4 1175	17 3/4 451	15 381	12 1/4 311	798 362

CONTACT US

For more information, contact your Regional Sales Manager or call us at:

1-800-825-6937

Your Local Sales Professional:

Model KLRC-200, KLRC-300

Features

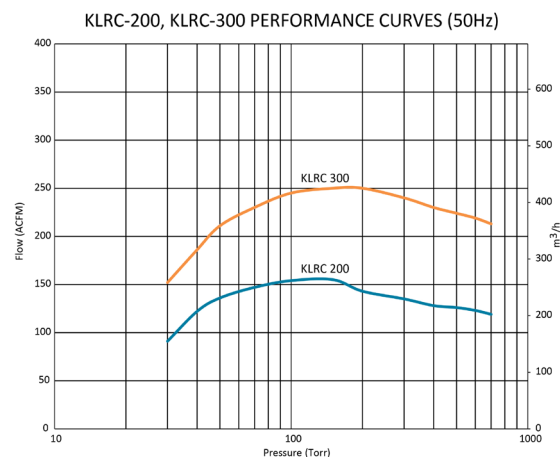
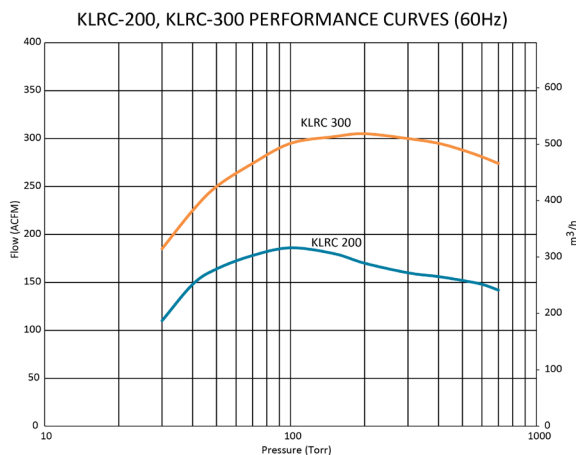
- Impellers positively locked to shaft
- Reliable mechanical seals for high-integrity sealing and low shaft friction
- Center-anchored tie rods allow access to either end of the pump without total disassembly
- Precision casting and CNC machining eliminates the need for body gasketing (process dependent)
- Replaceable end plates
- Clearance adjustments via shims
- Made in the USA



KLRC - 200/300 Material & Seal Code		
KLRC-200/300 XY	X	Material code
	Y	Mechanical seal code
Material Code (X)	F	Cast iron casings, SS316L impellers & SS316 shaft
	C	All wetted parts SS316L & SS316 shaft
Mechanical Seal Code (Y)	A	John Crane Type 21 Carbon/Ceramic/Viton
	D	Flowserve Type RO Carbon/ Durchrome/Viton.
	L	PTFE encapsulated Viton O-Rings
Consult factory for alternate seal configurations		

Specifications	KLRC-200		KLRC-300	
	60 Hz	50 Hz	60 Hz	50 Hz
Motor Power	15 HP	11 KW	25 HP	18.5 KW
Pump Speed	1750 RPM	1450 RPM	1750 RPM	1450 RPM
Seal Water Flow	8 GPM		12 GPM	
Noise Level	74 dBA @ 60 Torr (3 ft)			
Maximum Allowable Suction Temperature	220°F (Hot Pump)			

Typical Pumping Speed Curves



- 1.) Above performance data based on 68° F inlet air with 50% relative humidity and using water as a sealant at 60° F.
- 2.) All SS pump capacity less 10%

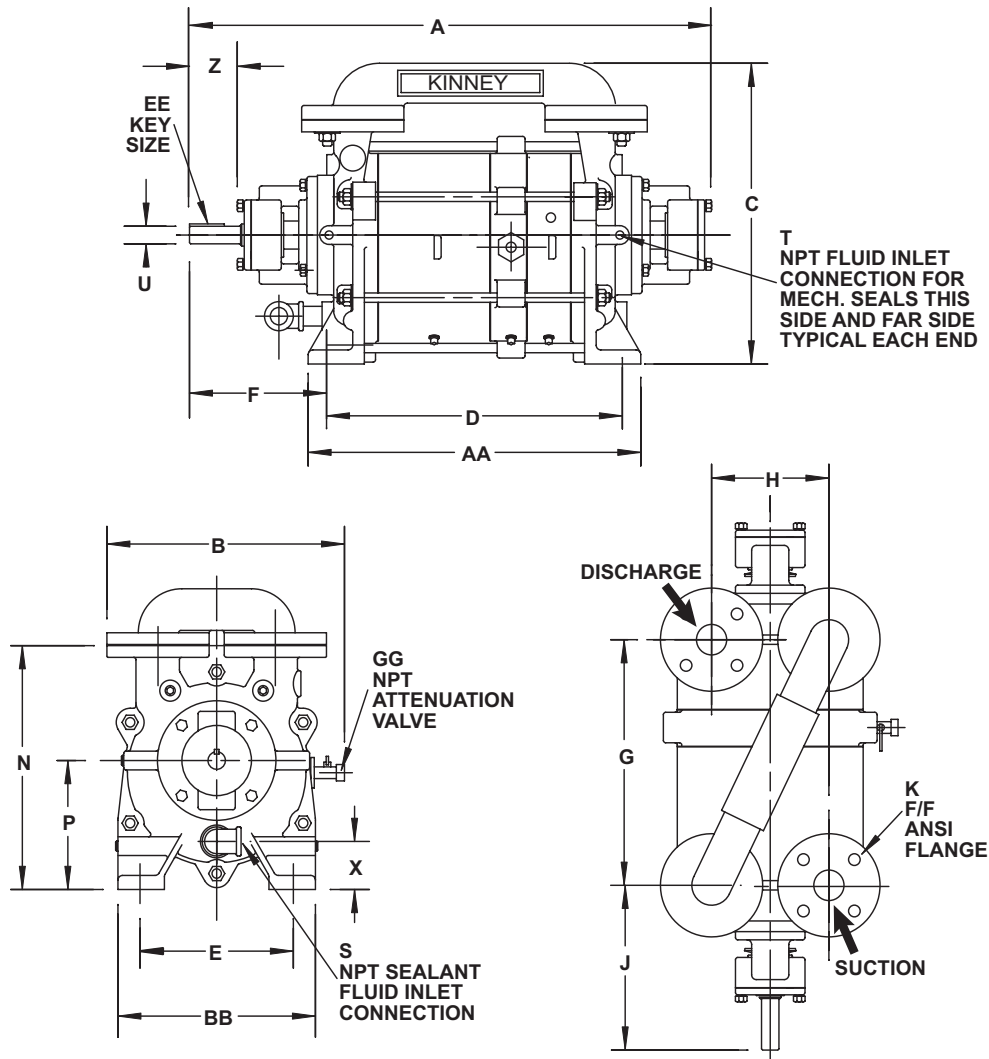
Dimensions

Values shown are approximate and should not be used for construction.
 Certified drawings are available through your local Kinney Sales Professional.

Bare Shaft Pump

Models: **KLRC-200 & KLRC-300**

PUMP ROTATION CLOCKWISE
 FACING PUMP SHAFT

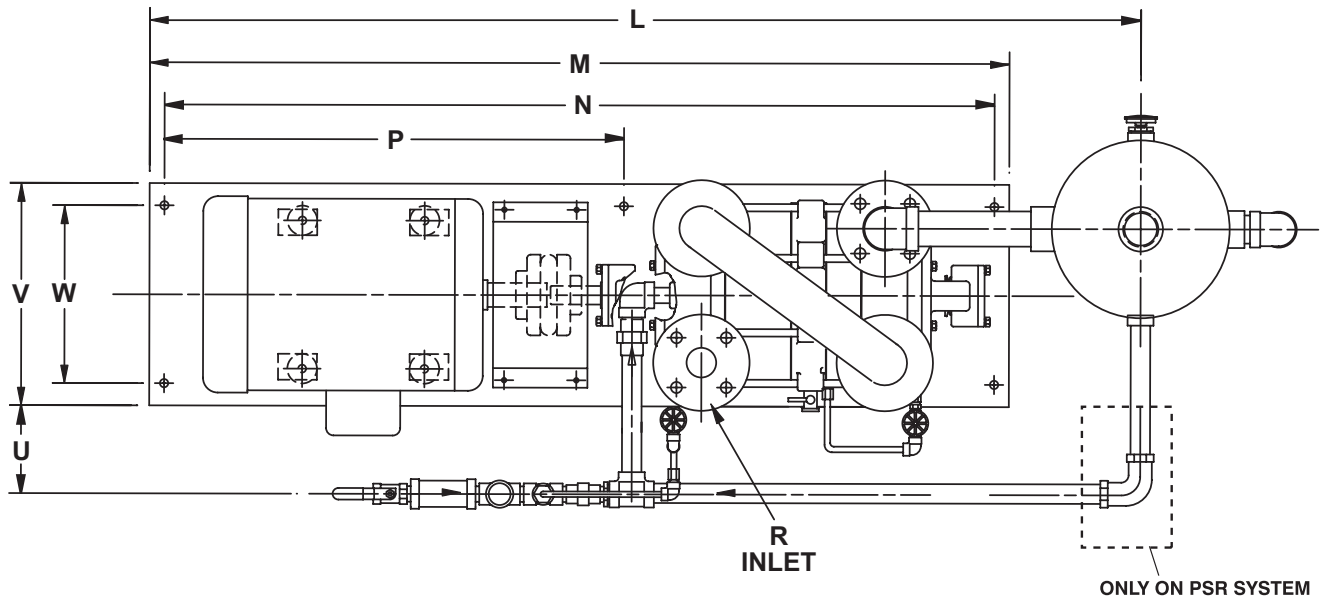
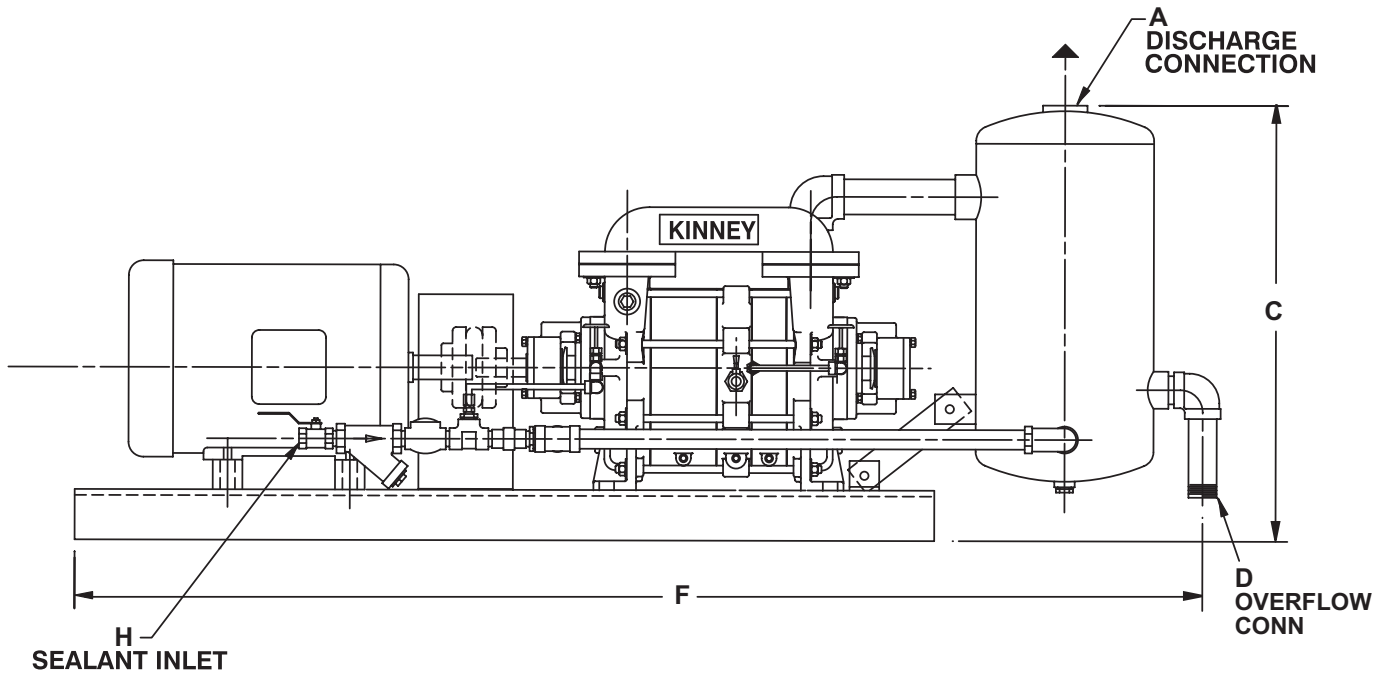


in mm	A	B	C	D	E	F	G	H	J	K	N
KLRC-200	29 11/16 754	16 7/8 428	19 1/8 486	15 381	9 1/4 235	8 13/16 224	12 3/8 314	9 1/16 230	10 3/16 259	2" ANSI	15 1/4 387
KLRC-300	33 9/16 853	16 7/8 428	19 1/8 486	19 483	9 1/4 235	8 13/16 224	16 5/16 414	9 1/16 230	10 3/16 259	2" ANSI	15 1/4 387

in mm	P	S	T	U	X	Z	AA	BB	EE	GG	APPROX WEIGHT LBS / kg
KLRC-200	8 1/4 210	1" NPT	1/4" NPT	1 1/4"	3 3/8" 86	3 76	16 15/16 430	11 3/4 299	1/4	1/4" NPT	360 / 163
KLRC-300	8 1/4 210	1" NPT	1/4" NPT	1 1/4"	3 3/8" 86	3 76	20 7/8 530	11 3/4 299	1/4 x 1/4	1/2" NPT	405 / 184

NSR (No Sealant Recovery) & PSR (Partial Sealant Recovery) System

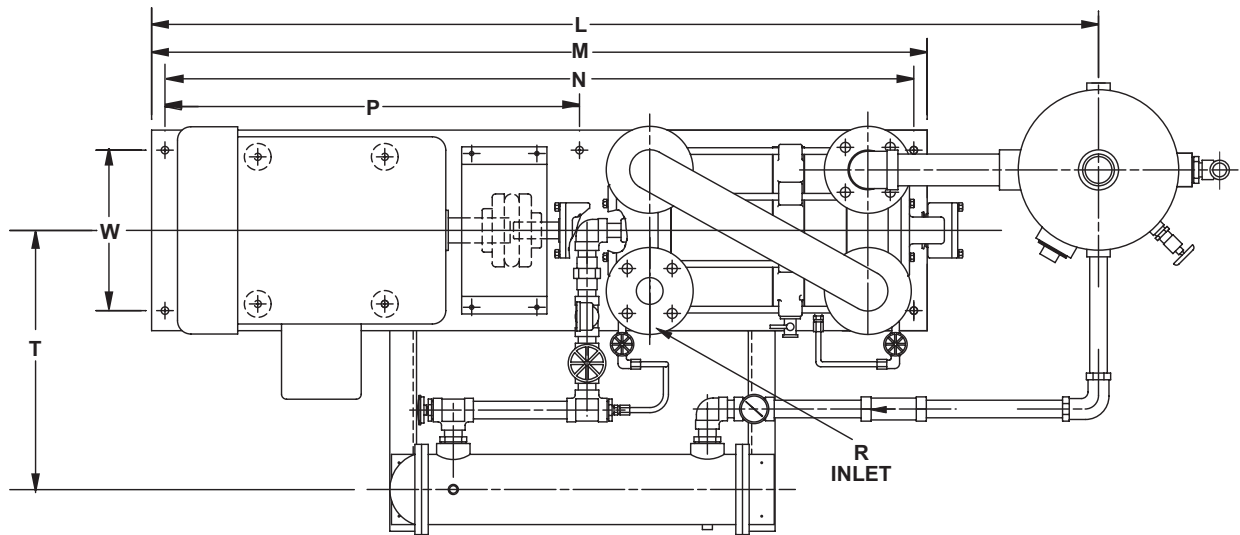
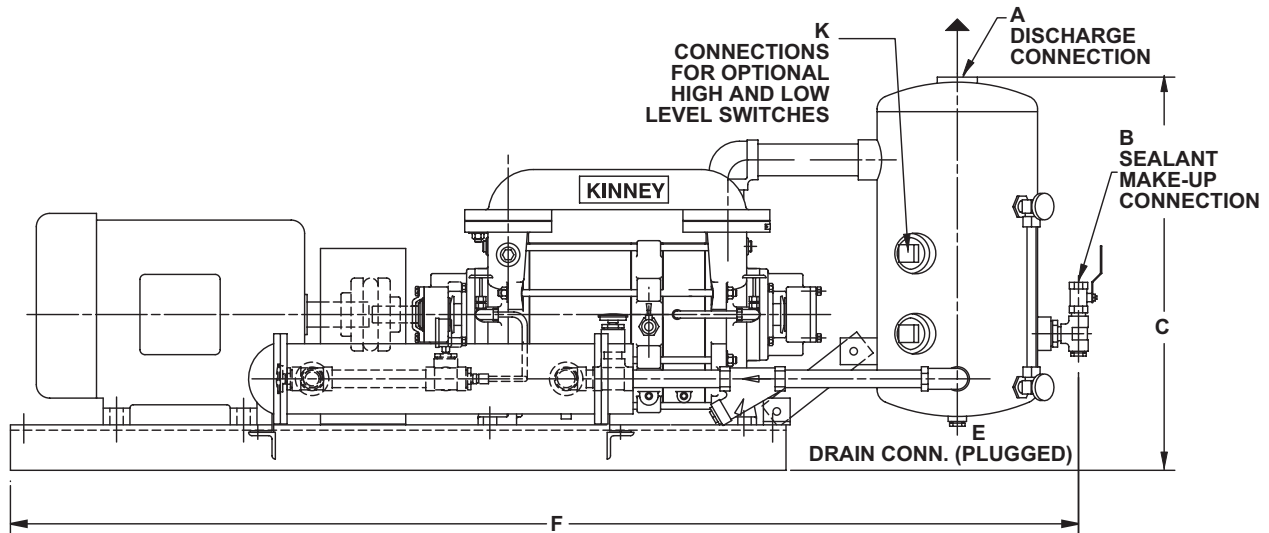
Models: KLRC-200 & KLRC-300



in mm	A	C	D	F	H	L	M	N	P	R	U	V	W	APPROX. WEIGHT LBS / kg
KLRC-200	2" NPT	29 3/8 746	1 1/2" NPT	76 7/16 1942	3/4" NPT	66 7/8 1699	58 1473	56 1422	31 787	2" F/F Flange	6 13/16 173	15 381	12 305	840 381
KLRC-300	2" NPT	29 3/8 746	1 1/2" NPT	81 2057	3/4" NPT	70 13/16 1799	58 1473	56 1422	31 787	2" F/F Flange	7 5/16 186	15 381	12 305	920 417

FSR (Full Sealant Recovery) System

Models: KLRC-200 & KLRC-300



in mm	A	B	C	E	F	K	L	M	N	P	R	T	W	APPROX. WEIGHT LBS / kg
KLRC-200	2" NPT	3/4" NPT	29 3/8 746	3/4" NPT	76 1930	(2) 2" NPT	66 7/8 1698	58 1473	56 1422	31 787	2" F/F FLANGE	18 1/8 460	12 305	1220 553
KLRC-300	2" NPT	3/4" NPT	29 3/8 746	3/4" NPT	80 2032	(2) 2" NPT	70 13/16 1799	58 1473	56 1422	31 787	2" F/F FLANGE	19 5/8 498	12 305	1252 568

CONTACT US

For more information, contact your
Regional Sales Manager or call us at:

1-800-825-6937

Your Local Sales Professional:

Model KLRC-525, KLRC-526

Direct Driven

Belt Driven

Features

- Impellers positively locked to shaft
- Reliable mechanical seals for high-integrity sealing and low shaft friction
- Center-anchored tie rods allow access to either end of the pump without total disassembly
- Precision casting and CNC machining eliminates the need for body gasketing (process dependent)
- Replaceable end plates
- Clearance adjustments via shims
- Made in the USA



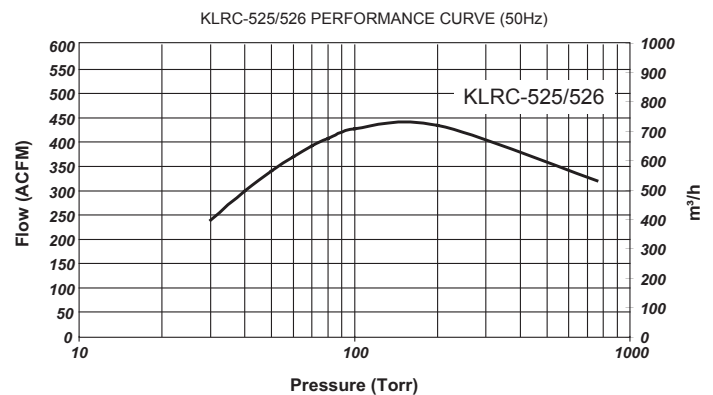
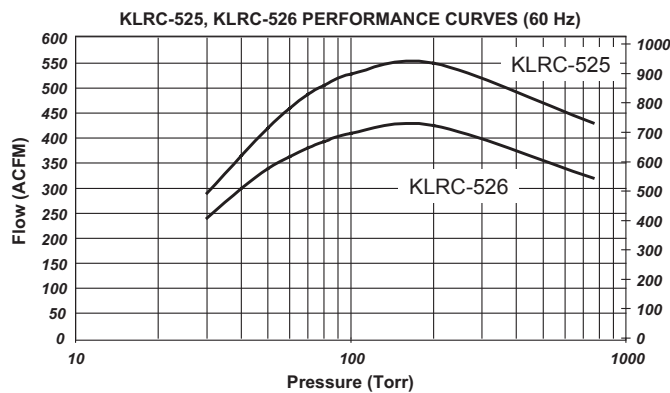
KLRC - 525/526 Material & Seal Code		
KLRC-200/300 XY	X	Material code
	Y	Mechanical seal code
Material Code (X)	F	Cast iron casings, SS316L impellers & SS316 shaft
	C	All wetted parts SS316L & SS316 shaft
Mechanical Seal Code (Y)	A	John Crane Type 21 Carbon/Ceramic/Viton
	D	Flowserve Type RO Carbon/Durchrome/Viton.
	L	PTFE encapsulated Viton O-Rings
Consult factory for alternate seal configurations		

Specifications	KLRC-525**		KLRC-526*	
	60 Hz	50 Hz	60 Hz	50 Hz
Motor Power	50 HP		40 HP	
Pump Speed	1750 RPM	1450 RPM	1450 RPM	1450 RPM
Seal Water Flow	18 GPM			
Noise Level	79 dBA @ 60 Torr (3 ft)			
Maximum Allowable Suction Temperature	220°F (Hot Pump)			

* V-Belt drive

** Direct Drive

Typical Pumping Speed Curves



- 1.) Above performance data based on 68° F inlet air with 50% relative humidity and using water as a sealant at 60° F.
- 2.) All SS pump capacity less 10%

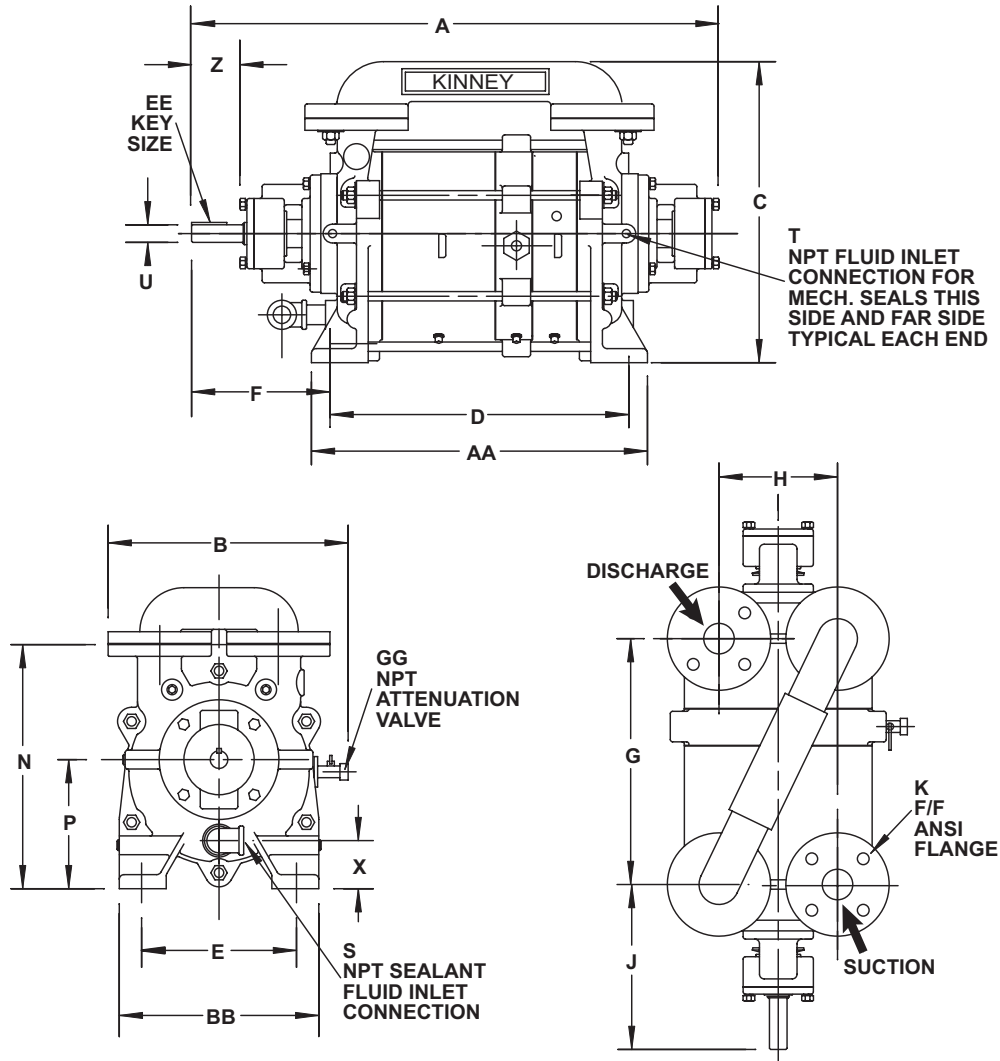
Dimensions

Values shown are approximate and should not be used for construction.
 Certified drawings are available through your local Kinney Sales Professional.

Bare Shaft Pump

Models: **KLRC-525 & KLRC-526**

PUMP ROTATION CLOCK-
 WISE FACING PUMP SHAFT

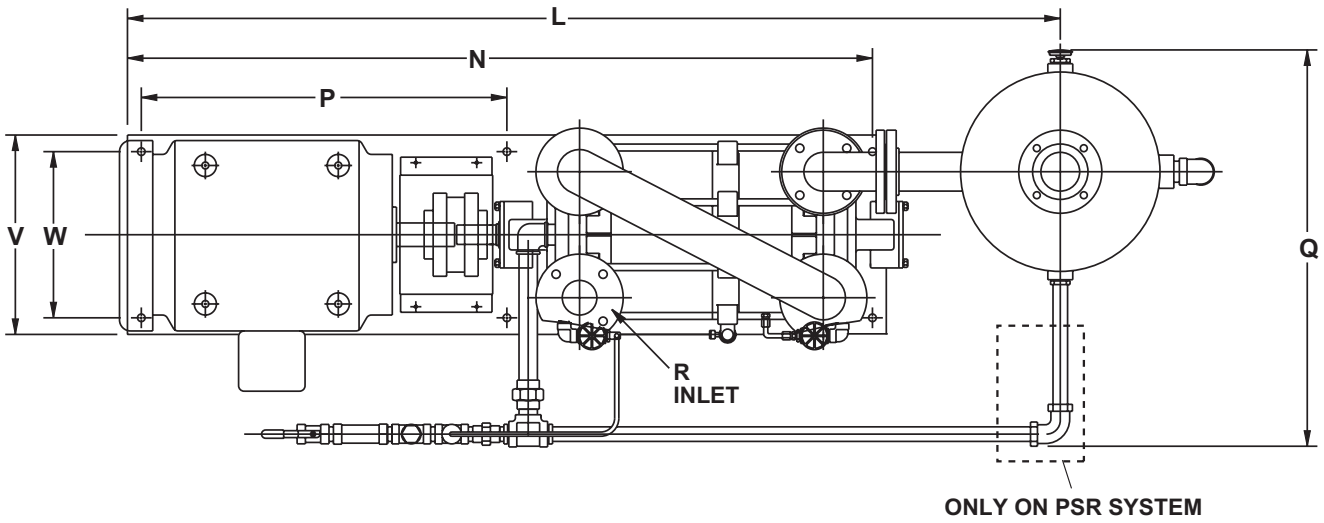
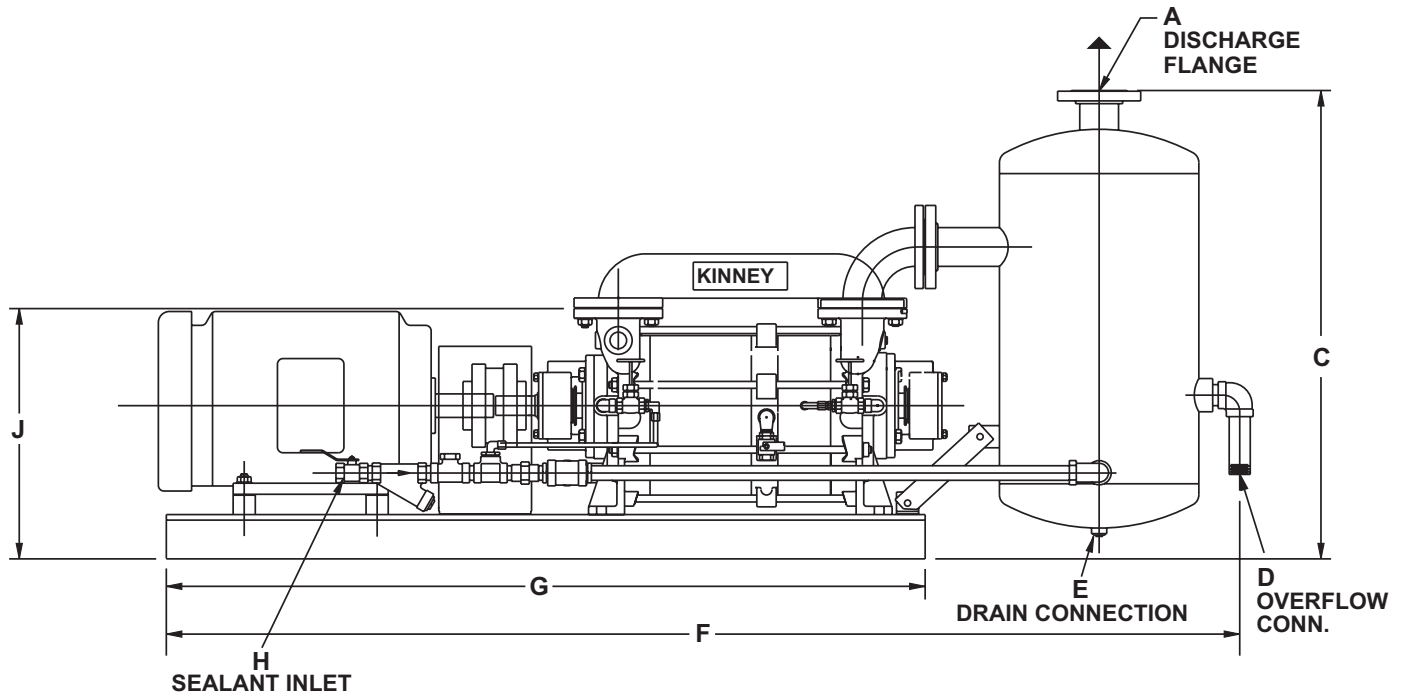


in mm	A	B	C	D	E	F	G	H	J	K	N
KLRC-525/526	41 1041	18 7/8 479	23 1/2 596	25 1/16 637	12 5/8 320	9 9/16 243	22 559	11 3/8 288	11 1/8 283	3"	18 9/16 472

in mm	P	S	T	U	X	Z	AA	BB	EE	GG	APPROX. WEIGHT LBS / kg
KLRC-525/526	9 13/16 249	1 1/4"	1/2 NPTF	1 3/4"	3 3/4 95	3 1/2 89	27 3/8 695	15 3/4 400	3/8 x 3/8	3/4"	800 / 363

NSR (No Sealant Recovery) & PSR (Partial Sealant Recovery) System

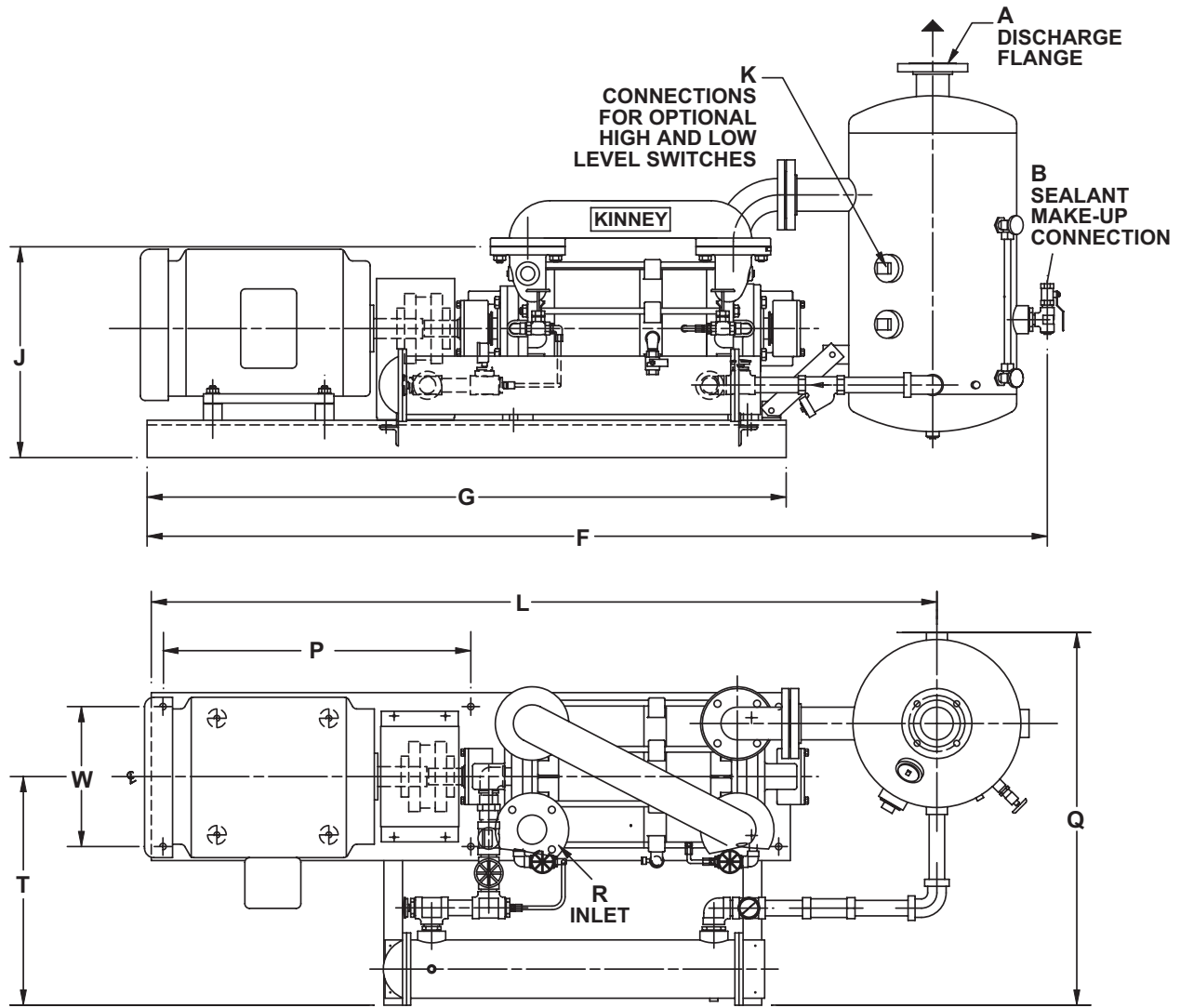
Models: KLRC-525 & KLRC-526



in mm	A	C	D	E	F	G	H	J	L	N	P	Q	R	V	W	APPROX. WEIGHT LBS / kg
KLRC-525	3" ANSI 150 LB FLANGE	42 1/4 1073	1 1/2" NPT	3/4" NPT	97 9/16 2478	68 1/2 1740	1" NPT	22 9/16 573	84 1/4 2140	66 1676	33 838	36 11/16 932	3" F/F FLANGE	18 457	15 381	1755 796

FSR (Full Sealant Recovery) System

Models: KLRC-525 PLEASE CONSULT FACTOR FOR DRAWING OF KLRC-526



in mm	A	B	F	G	J	K	L	P	Q	R	T	W	APPROX. WEIGHT LBS / kg
KLRC-525	3" ANSI 150 LB FLANGE	3/4" NPT	96 7/8 2461	68 1/2 1740	22 9/16 573	(2) 2" NPT	84 3/16 2138	33 838	40 3/4 1035	3" F/F FLANGE	24 1/2 622	15 381	2400 1089

CONTACT US

For more information, contact your
Regional Sales Manager or call us at:

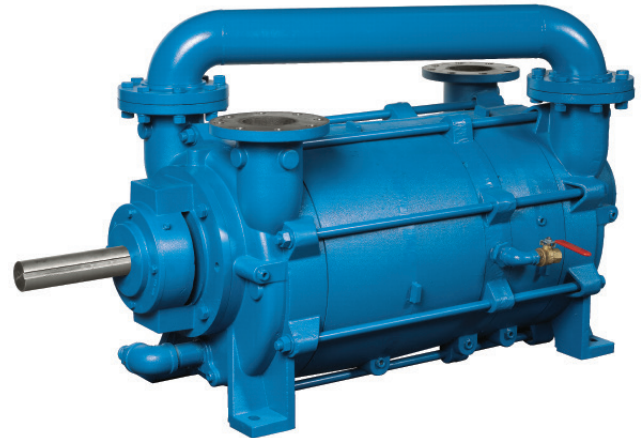
1-800-825-6937

Your Local Sales Professional:

Model KLRC-950, KLRC-951

Features

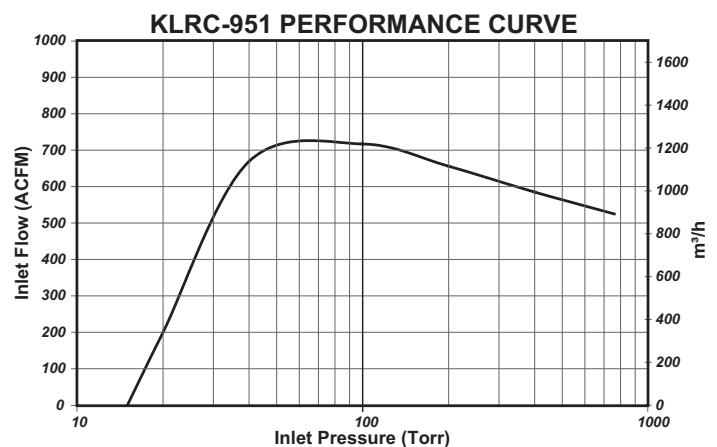
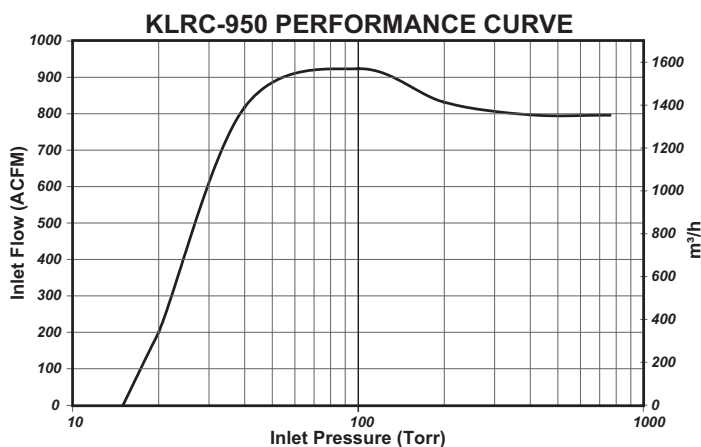
- Impellers positively locked to shaft
- Reliable mechanical seals for high-integrity sealing and low shaft friction
- Center-anchored tie rods allow access to either end of the pump without total disassembly
- Precision casting and CNC machining eliminates the need for body gasketing (process dependent)
- Replaceable end plates
- Clearance adjustments via shims
- Made in the USA



KLRC - 950/951 Material & Seal Code		
KLRC-200/300 XY	X	Material code
	Y	Mechanical seal code
Material Code (X)	F	Cast iron casings, SS316L impellers & SS316 shaft
Mechanical Seal Code (Y)	A	John Crane Type 21 Carbon/Ceramic/Viton
	D	Flowserve Type RO Carbon/Durchrome/Viton.
	M	Flowserve Type RO Carbon/Durchrome/Kalrez
Consult factory for alternate seal configurations		

Specifications	KLRC-950	KLRC-951
Motor Power	100 HP	60 HP
Pump Speed	1150 RPM	880 RPM
Seal Water Flow	760 to 300 Torr: 20 GPM 300 to 25 Torr: 30 GPM	
Noise Level	79 dBA @ 60 Torr (3 ft)	
Maximum Allowable Suction Temperature	160° F	

Typical Pumping Speed Curves



Above performance data based on 68° F inlet air with 50% relative humidity and using water as a sealant at 60° F.

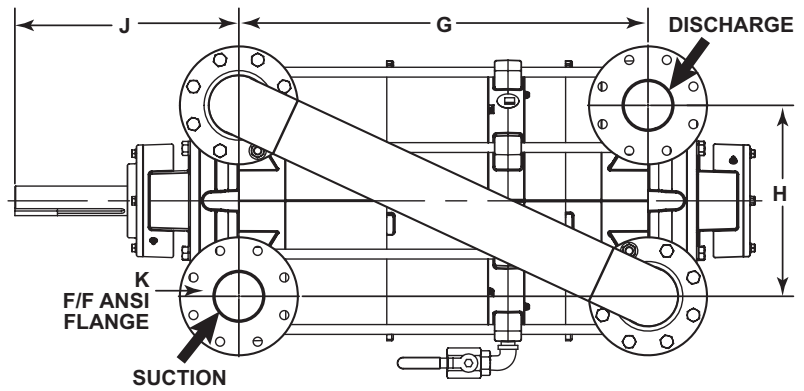
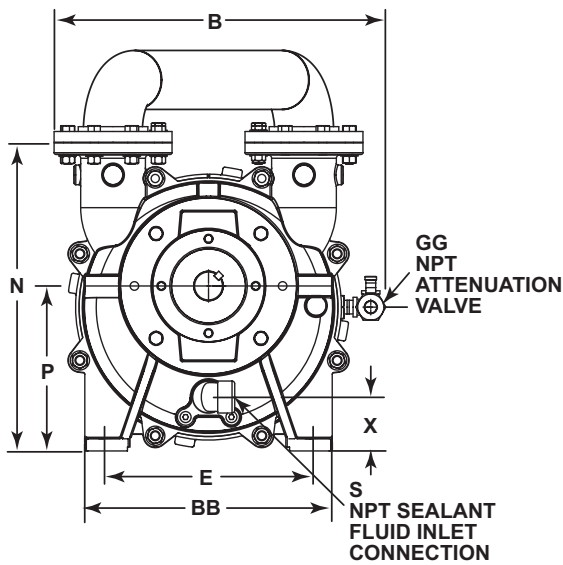
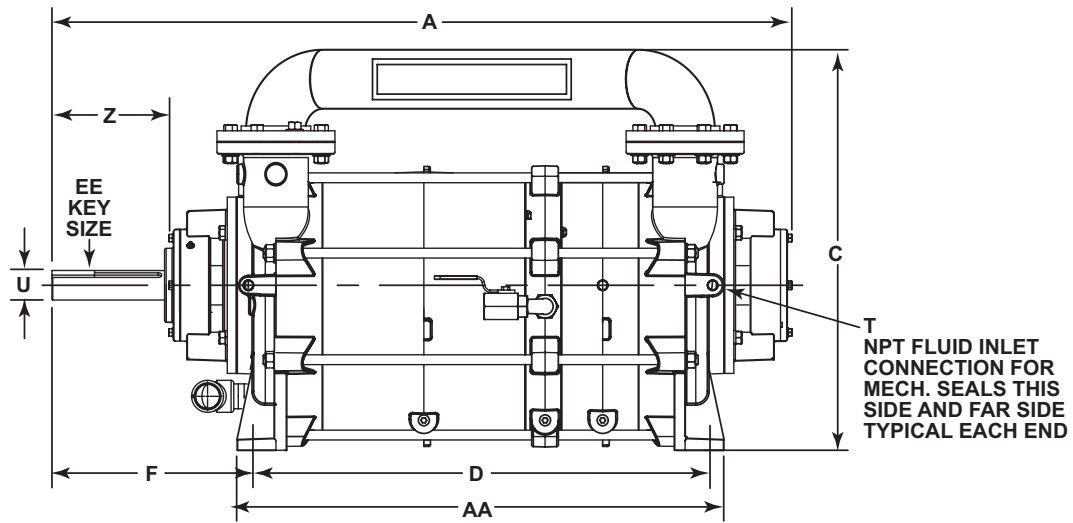
Dimensions

Values shown are approximate and should not be used for construction.
 Certified drawings are available through your local Kinney Sales Professional.

Bare Shaft Pump

Models: **KLRC-950 & KLRC-951**

PUMP ROTATION CLOCK-
 WISE FACING PUMP SHAFT

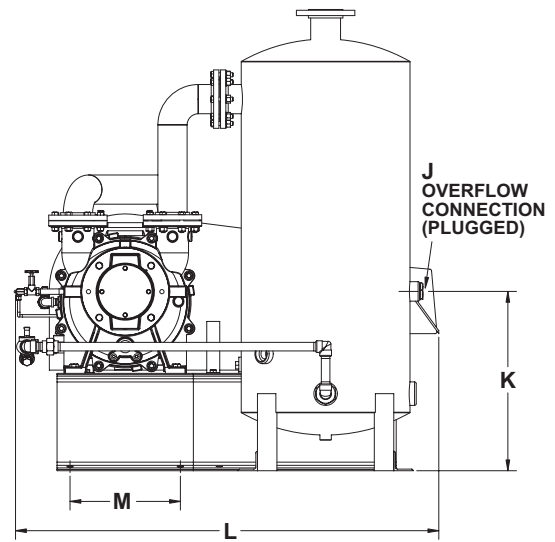
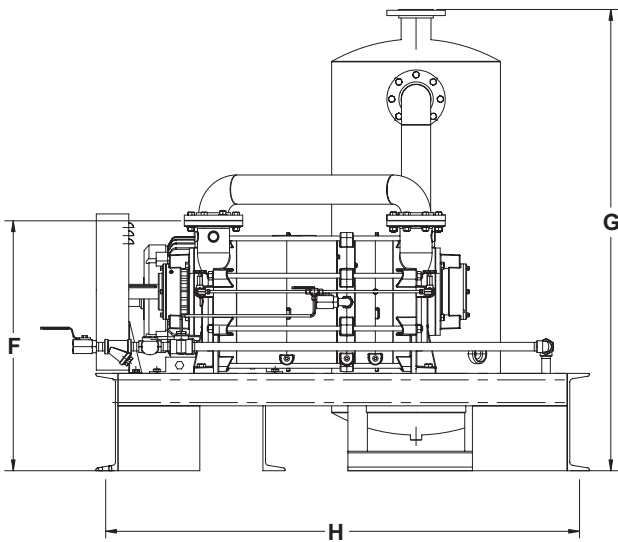
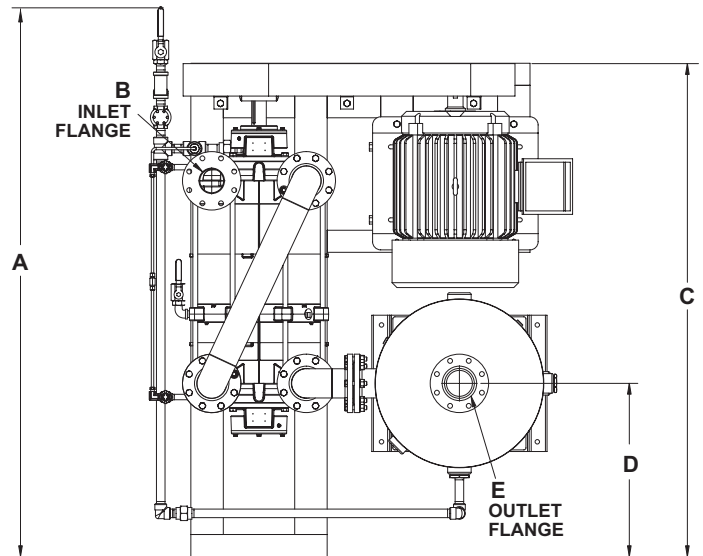
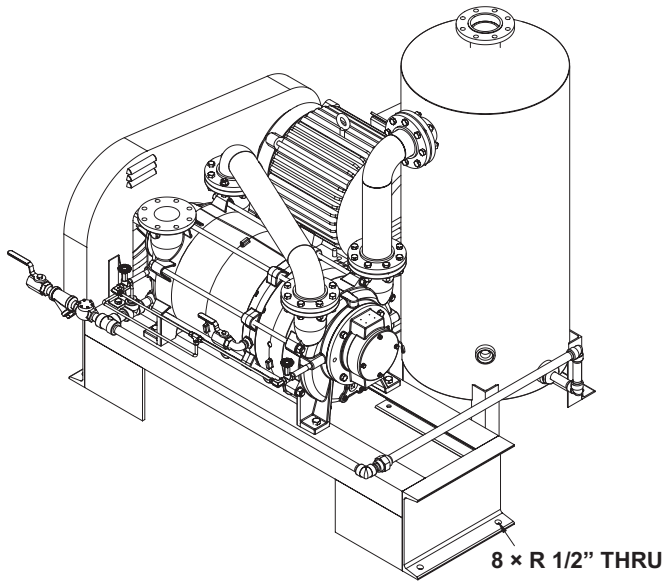


in mm	A	B	C	D	E	F	G	H	J	K	N
KLRC-950/951	56 1/2 1435	25 5/16 643	30 9/16 776	35 889	15 3/4 400	15 3/16 385	31 3/16 792	14 9/16 370	17 1/8 435	4" ANSI	23 1/2 597

in mm	P	S	T	U	X	Z	AA	BB	EE	GG	APPROX. WEIGHT LBS / kg
KLRC-950/951	12 5/8 321	1 1/2" NPT	1/2" NPT	2 1/4"	4 1/8 105	8 5/8 219	37 3/8 949	18 7/8 479	1/2 x 1/2	3/4" NPT	1588 720

PSR (Partial Sealant Recovery) System

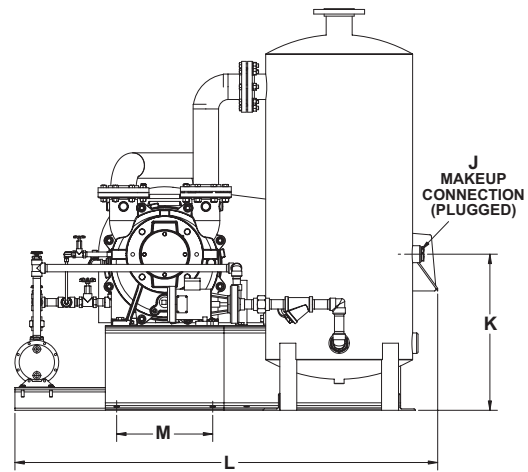
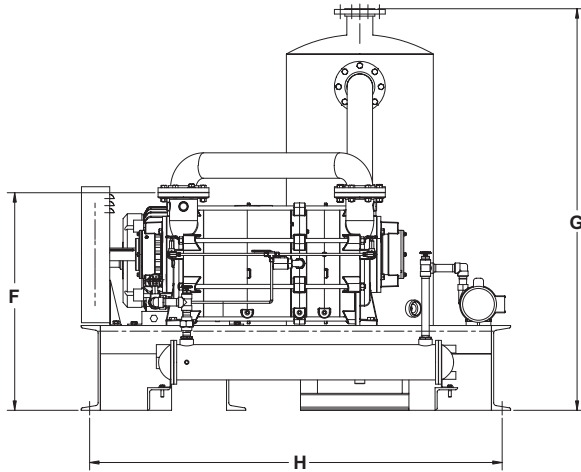
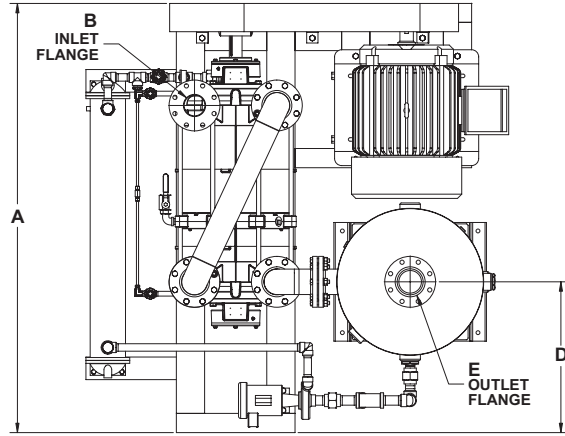
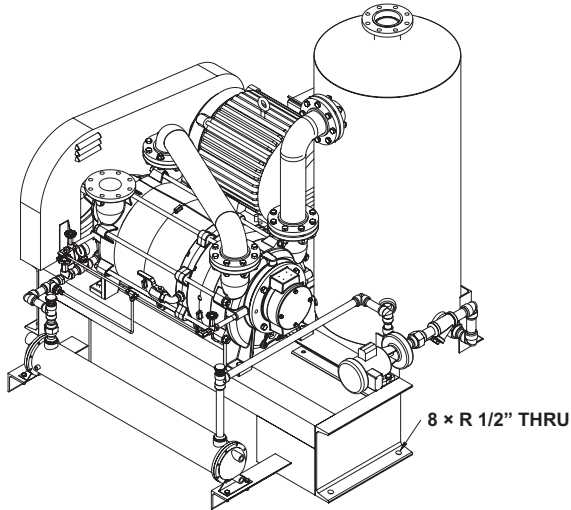
Models: KLRC-950 & KLRC-951



in mm	A	B	C	D	E	F	G	H	J	K	L	M	APPROX. WEIGHT LBS / kg
KLRC-950/951	84 9/16 2148	4" ANSI	75 15/16 1929	26 11/16 662	4 " ANSI	38 1/2 978	71 1/16 1805	73 1854	2" NPT	27 5/8 702	65 3/16 1656	17 432	2866 1300

FSR (Full Sealant Recovery) System

Models: KLRC-950 & KLRC-951



in <i>mm</i>	A	B	D	E	F	G	H	J	K	L	M	APPROX. WEIGHT LBS / <i>kg</i>
KLRC-950/951	76 1930	4" ANSI	26 11/16 662	4 " ANSI	38 1/2 978	71 1/16 1805	73 1854	2" NPT	27 5/8 702	74 13/16 1900	17 432	3332 1511

CONTACT US

For more information, contact your
Regional Sales Manager or call us at:

1-800-825-6937

Your Local Sales Professional: