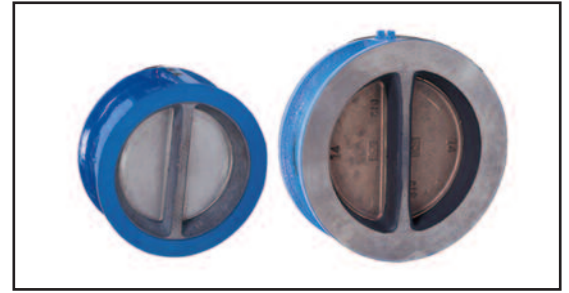
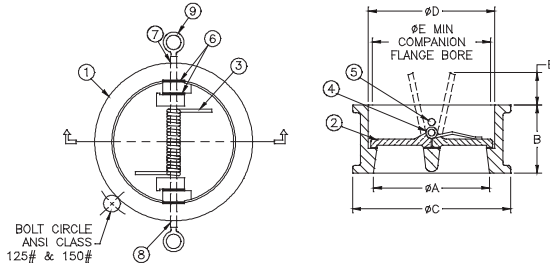
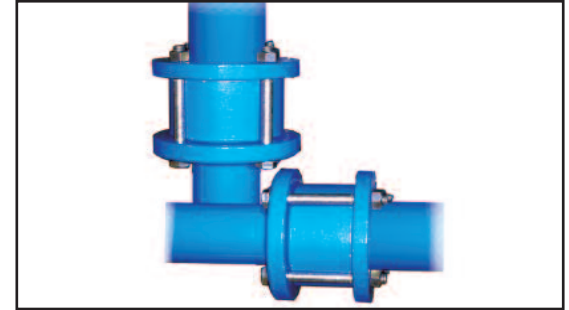


WAFFER CHECK VALVE SPLIT DISC® Model 848 / 895



Model 895 2"-12"

ITEM #	QTY.	DESCRIPTION	MATERIAL	ASTM
1	1	VALVE BODY SEAL MOLDED TO BODY	CAST IRON/EPDM	----
2	1	DISC (2)	STAINLESS STEEL	304
3	1	TORSION SPRING	STAINLESS STEEL	316
4	1	DISC HINGE PIN	STAINLESS STEEL	316
5	1	DISC STOP PIN	STAINLESS STEEL	304
6	4	DISC BEARING	PTFE	----
7	2	PIN RETAINER	STEEL	----



Model 848: 14"-24"

ITEM #	QTY.	DESCRIPTION	MATERIAL	ASTM#
1	1	VALVE BODY SEAL MOLDED TO BODY	CAST IRON/BUNNA-N	A126, CLASS B
2	1	DISC (2)	UNLEADED BRONZE	B62
3	1	TORSION SPRING	STAINLESS STEEL	304
4	1	DISC HINGE PIN	STAINLESS STEEL	304
5	1	DISC STOP PIN	STAINLESS STEEL	304
6	4	DISC BEARING	PTFE	----
7	2	PIN RETAINER	STEEL	----

Operation:

Two independent discs, hinged on a common shaft are held parallel against an elastomer seat by torsional spring force

Installation:

Flomatic Split Disc® check valves are designed for simple Flange-supported installations between standard flanges in the horizontal or in the vertical flow up position. For horizontal flow applications valve must be installed with disc hinge pin in the vertical position to insure proper operation.

Applications:

- General Utilities
- Chemical
- Power Generation
- Oil Field
- HVAC
- Marine
- Petrochemical
- Steel Industry
- Mechanical Contractors
- Commercial Construction

Benefits:

- Low headloss
- Compact
- Reliable
- Temp Max: 180°F
- Flow responsive closure
- Resilient seating
- PTFE Disc bearings
- Pressure Max: 200 PSI

895 WEIGHTS & DIMENSIONS

Valve Size	Part #	B	C	D	E	F	WGT.
2"	3000	2 1/8	4 1/4	2 3/8	2 1/8	n/a	2.6
2 1/2"	3001	2 1/8	5	2 7/8	2 1/2	5/64	4
3"	3002	2 1/4	5 11/16	3 1/2	3 9/64	1/2	6.4
4"	3003	2 1/2	6 1/2	4 1/2	3 3/32	55/64	8.6
5"	3004	2 3/4	7 5/8	5 9/16	5 5/32	1 3/8	12.8
6"	3005	3	8 11/16	6 5/8	6 3/16	1 27/32	17.6
8"	3006	3 3/4	10 7/8	8 5/8	7 61/64	2 21/64	30.9
10"	3007	4 1/4	13	10 3/4	10 5/32	3 5/64	48.5
12"	3008	5 5/8	15	12 3/4	12 3/64	3 7/32	75

848 WEIGHTS & DIMENSIONS

14"	2509	7 1/4	17 3/4	14	12 1/2	2 1/2	120
16"	2510	7 1/2	20 1/8	16 1/2	15	3 1/2	170
18"	2511	8	21 1/2	10 1/2	17	4 1/4	180
20"	2512	8 5/16	24 3/8	20 1/2	19	5 1/4	250
24"	2513	8 3/4	28 1/8	24 1/2	23	7 1/8	360

NOTE: 6" through 20" has one "Eyebolt" for lifting. 24" size has two.

